

- Logical expression

Example:

```
int a=10;

print("%d", a );
print("%d", a==1 );
print("%d", a>1 );
print("%d", a=5);

a = (a != 5);
```

Prints 10

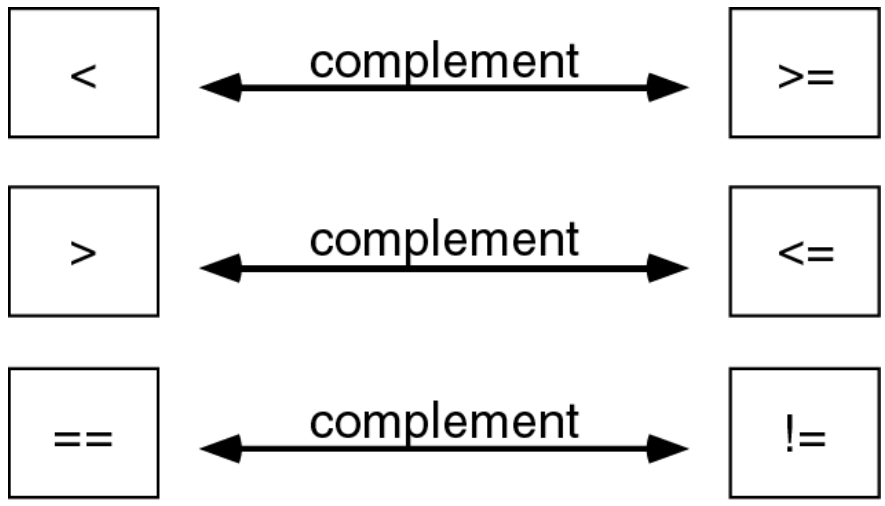
Prints 0. Is 10==1 ? => False =>0

Prints 1. Is 10>1 ? => True => 1

Prints 5. This is not a logical expression, but it is a assignment expression.

a = 0

Figure 5-5: Logical operator complements

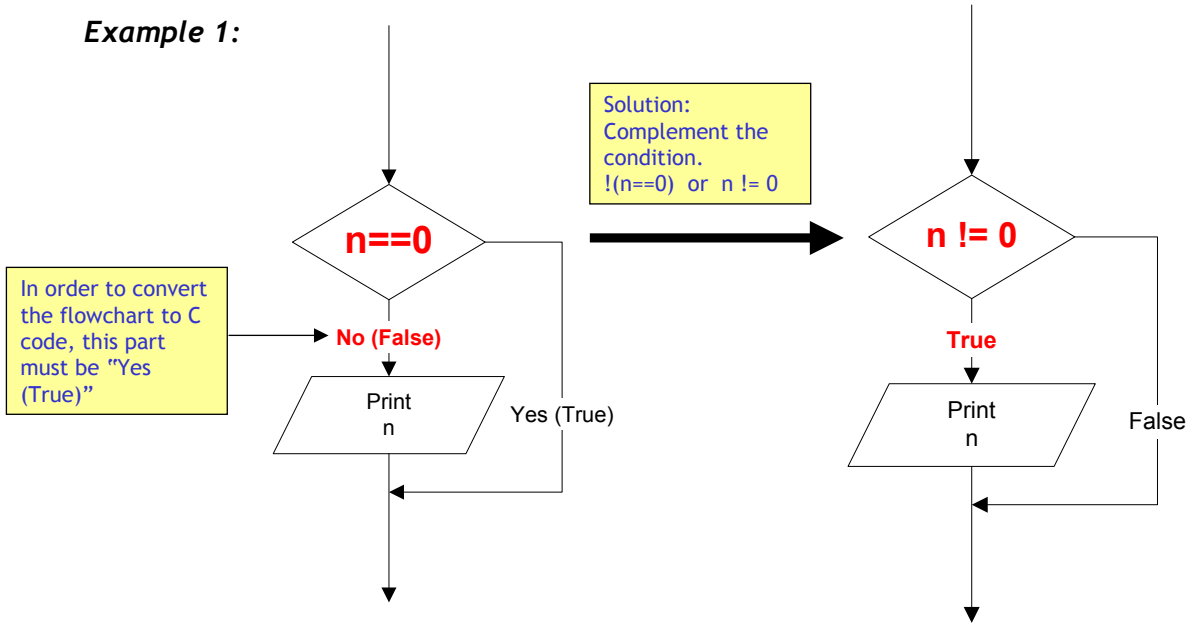


- Another way to complement an expression, put the Not operator (!) in front of it.

Example: Complement of  $n==0$  is  $!(n==0)$

- When to use complement?

Example 1:



- When to use complement?

Example 2:

