

Flowchart – Tutorial

1. Calculate the perimeter and area of a trapezoid in Figure 1.

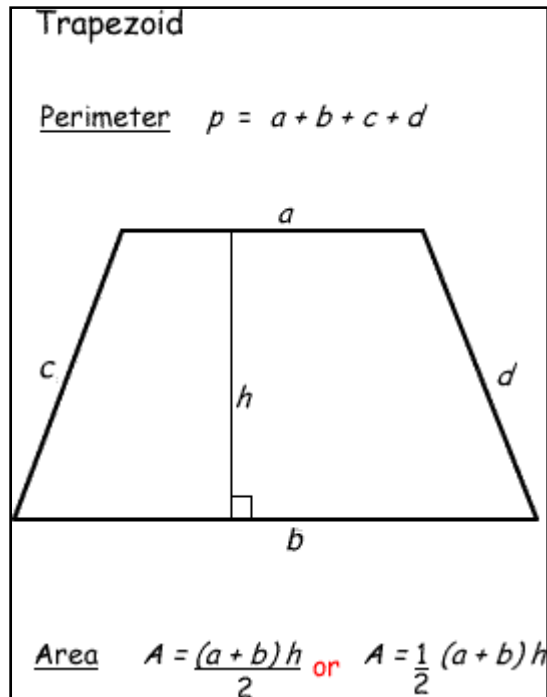


Figure 1

[Pair work]

2. Find the median, mode and mean of : **9, 3, 3, 44, 17, 17, 44, 15, 15, 15, 27, 40, 8**
[Pair work]

Assignment 1: Flowchart

Please do this assignment as pair work.

Due date : **20 July 2009 (Please submit – next class meeting)**

1. Design a flowchart for a system that displays a specific message when a decorator enters width and height of 5 glass windows. The messages are :

- a. *Width is too small*
- b. *Width is too large*
- c. *Height is too small*
- d. *Height is too large*

Before that, he has set the maximum and minimum of both width and height of the glass window. The maximum width is 5.0m, minimum width is 0.5m, maximum height is 3.0m and minimum height is 0.75.

2. Please specify the output for this flowchart in Figure 2.

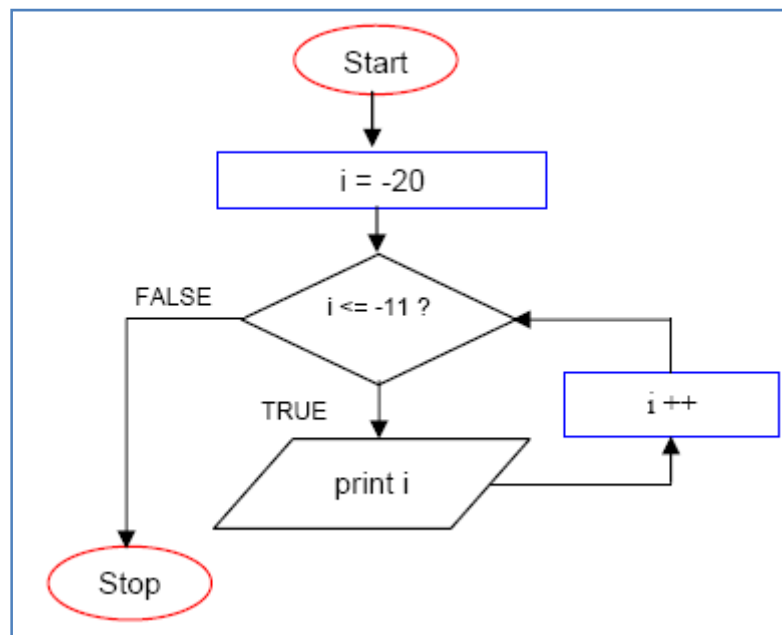


Figure 2